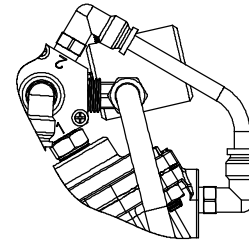
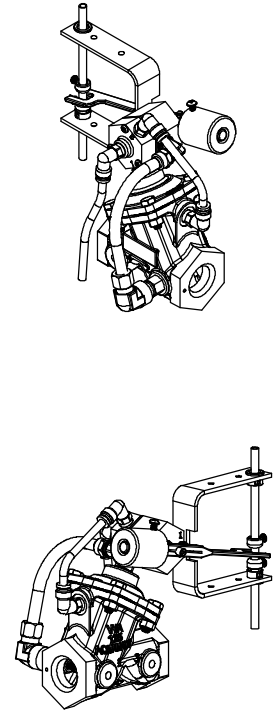
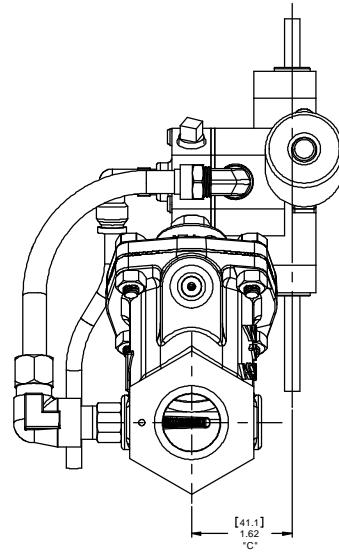
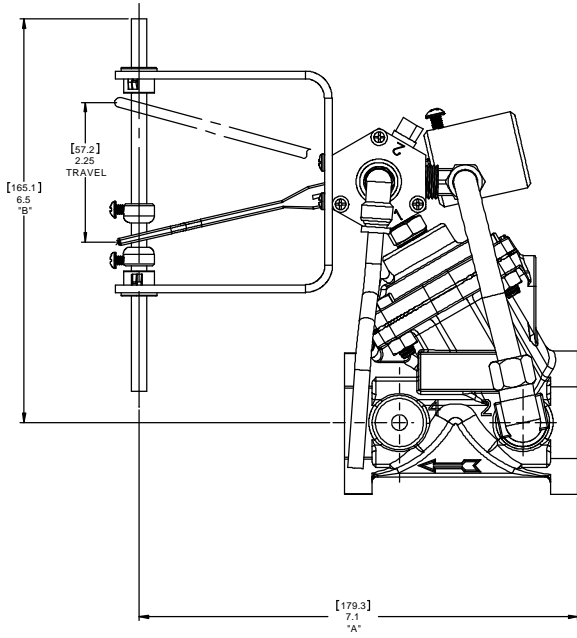


**SECTION A-A
SCALE 2 : 1
STAINER ASSEMBLY**



POWERED OPEN OPTION
FOR DETAILED ASSEMBLY SEE PGS - 2 & 5



VALVE SERIES	421	424	425	426	427	428
PIPE SIZE	1"	1-1/4", 1-1/2"	2"	2"	3"	4"
A	7.20 192.9	8.29 210.6	9.29 132.1	9.87 236.0	10.80 274.3	12.80 325.1
B	6.50 165.1	7.81 198.4	8.37 212.6	9.56 242.8	10.56 268.2	13.81 350.8
C	1.70 43.2	4.20 106.7	5.20 132.1	5.20 132.1	6.20 157.5	6.20 157.5

REVISIONS					
ZONE	ECN	REV.	DESCRIPTION	DATE	APP'D
	31923	D	1-REWORK BY SCHEIDT/MS (SEE PREVIOUS REVISION FOR CHANGE DETAILS); 2-REPLACED FROM 10/18/10 AND DRAWING 10/18/10	11-17-11	TMS
	101724	E	1-UPDATED TITLE BLOCKS; 2-VAL 10/18/11; 3-ADD'D TOTAL; 4-ADD'D FOR 425 THRU 428 THIS SETTING; 5-REPLACES WITH HISTORY IN A/B/C/D	12MAR13	TJM
	104648	F	1-UPDATED TITLE BLOCKS; 2-ADD'D PG-3 & 4 FOR STD FLOAT VERSIONS; 3-ADD'D 421 5AC VIEW ON PG-2 & 4	22MAY15	TJM
	104648	G	1-11TH WAS 10/18/11; 2-ROTATED 1/2" 1/2" 3/4" 1/4" WAS 10/18/11; 4-ADDED SIDE VIEW; 5-11TH WAS 10/18/11; 6-11TH WAS 10/18/11; 7-11TH WAS 10/18/11; 8-11TH WAS 10/18/11	19AUG15	TJM
	105334	H	1-WAS 30334E NOW 16884; 2-1/4" IS WAS 1/4" 3/8; 3-ADD'D PG-7 (CLOSED IF LOW)	25NOV15	TJM

**421-428
FLOAT VALVES
ON THIS PAGE**

16855 Victor Rd
New Berlin, WI 53151
262-336-9700
www.aq-matic.com

© 2017 AQ Matic Valve and Controls Company, Inc. All rights reserved.

THIRD ANGLE PROJECTION	☺		
APPROVALS	DATE	TITLE	
DRAWN SM	04/18/11	CATALOG SHEET, 420 DAIPHHRAM FLOAT OPERATED VALVES	
APPROVED		SIZE D	REV H
CHECKED		SCALE 1:1	SHEET 1 OF 7

DO NOT SCALE DRAWING; USE DIMENSIONS SHOWN
INTERPRET DIMS AND TOLERANCES PER ASME Y14.5M-2009 UNLESS OTHERWISE SPECIFIED
TOLERANCES:
ANGLES: ± 1°
1 PLACE: ± 0.15 (0.06)
2 PLACE: ± 0.05 (0.02)
3 PLACE: ± 0.01 (0.005)

REVISIONS					
ZONE	ECN	REV.	DESCRIPTION	DATE	APP'D
SEE SHEET ONE FOR NOTES					

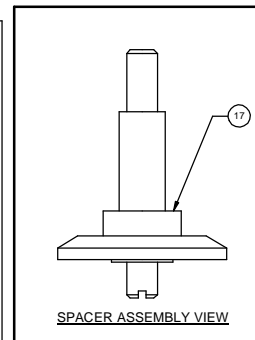
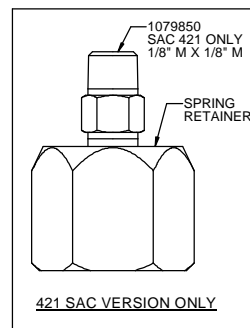
ITEM NO.	QTY. (421)	PART NUMBER	DESCRIPTION
1	1	1073992	FLOAT ONTL ASSY, 348, -AE
2	1	1074012	BRACKET, 348,
3	2	1072370	RD. HD. MCH. SCREW (6-32 X 1/4)
4	1	1074014	COUNTERWEIGHT, STD
5	2	1074017	CENTERING COLLAR, BRASS
6	1	1074034	LEVER, 348
7	2	1074016	BUSHING
8	1	1074023	FLOAT ROD
9	1	1074022	STUD, THRD. #12-24 UNC-2A, SS
10	1	16856-8	GREASE, LUBRI PLATE, FGL-2
11	1	1073996	FLOAT, SAND, 5"
12	1	1072375	RD. HD. MCH. SCREW (8-32 X 1/2)
13	1	1074002	FITTING TUBE, .37 OD
14	1	1074004	STRAINER, BRASS
15	1	1074127	SPACER, BRASS
16	4	1072371	SCREW, PLP., PH. HD.
17	1	1074037	FITTING, ELBOW, BRASS
18	1	1071936	TUBING, PLY 1/4" O.D. X .035
19	1	10332	FITTING, INSERT, 3/8
20	1	1071936	TUBING, PLY 1/4" O.D. X .035
21	1	1071940	FITTING, TUBE, .37 OD
22	1	1074038	FITTING, NI PIPE, 1/4X1/8 REDUCR
23	3	1078765	FITTING, ELBOW, TUBE, 1/8MNPT X
24	1	1074007	FITTING, ELBOW, TUBE 1/4FNPTX3/

SEE NOTE 2

PAINT OPTIONS	
PART #	COLOR
42805	RED
43198	BLUE
42807	BLACK
42808	ASH

NOTES:

1. DRILL AND TAP PORT #2 WITH 1/4" NPT. [421 VALVE]
2. SEE DRAWING 1078193 FOR ROD LENGTH/MATERIAL OPTIONS.
3. 421 MODEL IS SHOWN ON THIS DRAWING SHEET. SEE SHEET 4, 5, & 6 FOR 424-428 MODELS.
4. STANDARD 421 MODEL SHOWN.



POWERED OPEN VERSION
421 FLOAT VALVES
ONLY ON THIS PAGE

© 2017 AQ Matic Valve and Controls Company, Inc. All rights reserved.	THIRD ANGLE PROJECTION			1655 Vesper Rd New Berlin, WI 53151 262.335.9100 www.aq-matic.com		
	APPROVALS			DATE	TITLE	REV
	DRAWN			04/18/11	CATALOG SHEET, 420 DIAPHRAGM FLOAT OPERATED VALVES	H
	APPROVED				SIZE	D
CHECKED		SCALE	1:1	BR1078190	SHEET 2 OF 7	

DO NOT SCALE DRAWING; USE DIMENSIONS SHOWN
INTERPRET DIMS AND TOLERANCES PER ASME Y14.5M-2009
UNLESS OTHERWISE SPECIFIED
ALL FINISHED MACHINED SURFACES 125 \sqrt{R} OR BETTER
TOLERANCES:
ANGLES: \pm .015 DEG
1 PLACE: .0005
2 PLACE: .001
3 PLACE: .0001

REVISIONS					
ZONE	ECN	REV.	DESCRIPTION	DATE	APPD.
SEE SHEET ONE FOR NOTES					

ITEM NO.	QTY. (421)	PART NUMBER	DESCRIPTION
1	1	1073992	PILOT CNTL ASSY, 348, -AE
2	1	1074012	BRACKET, 348
3	2	1072370	RD. HD. MACH. SCREW, (6-32 X 1/4)
4	1	1074014	COUNTERWEIGHT, STD
5	2	1074017	CENTERING COLLAR, BRASS
6	1	1074034	LEVER, 348
7	2	1074016	BUSHING
8	1	1074023	FLOAT ROD
9	1	1074022	STUD, THRD, #12-24 UNC-2A, SS
10	1	16856-8	GREASE, LUBRIPLATE, FGL-2
11	1	1073996	FLOAT,SAND,5"
12	1	1072375	RD. HD. MACH SCREW, (8-32 X 1/2)
13	1	1074002	STRAINER
14	1	1074004	STRAINER ASSY
15	1	1074127	SPACER, BRASS
16	4	1072371	SCREW, PHL.P, PN HD
17	1	1074037	FITTING, ELBOW, BRASS
18	1	1071903	PLUG, PIPE
19	1	10332	FITTING, INSERT, 3/8
20	1	1071936	TUBING, POLY, 1/4" O.D. X .035
21	1	1071940	FITTING, TUBE, .37 OD
22	1	1074038	FITTING, NIPPLE, 1/4X1/8 REDUCR
23	1	1078765	FITTING, ELBOW, TUBE, 1/8MNPT X
24	1	1074007	FITTING, ELBOW, TUBE 1/4FNPTX 3/8

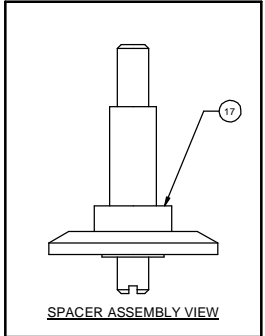
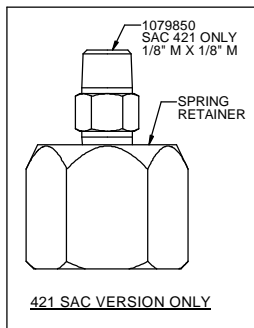
SEE NOTE-2

PAINT OPTIONS	
PART #	COLOR
42805	RED
43198	BLUE
42807	BLACK
42808	ASH

NOTES:

1. DRILL AND TAP PORT #2 WITH 1/4" NPT. [421 VALVE]
2. SEE DRAWING 1076193 FOR ROD LENGTH/MATERIAL OPTIONS.
3. 421 MODEL IS SHOWN ON THIS DRAWING SHEET. SEE SHEET 4, 5, & 6 FOR 424-428 MODELS.
4. STANDARD 421 MODEL SHOWN.

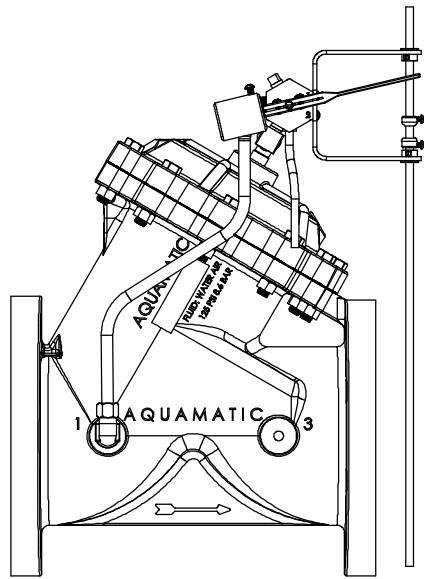
STANDARD VERSION
421 FLOAT VALVES
ONLY ON THIS PAGE



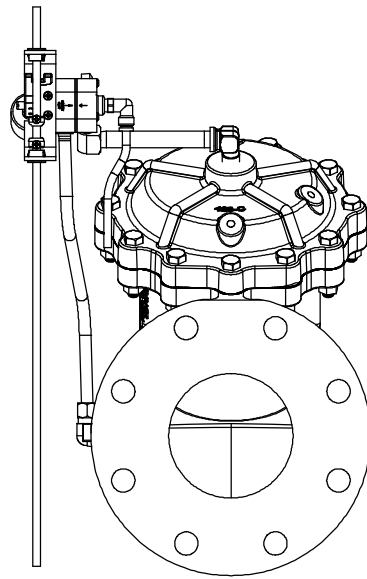
© 2017 AQ Matic Valve and Controls Company, Inc. All rights reserved.	THIRD ANGLE PROJECTION	DATE	 1800 Victor Rd New Berlin, WI 53151 262.326.9700 www.aq-matic.com
	APPROVALS	DATE	
	DRAWN SM	04/18/11	
	TITLE	CATALOG SHEET, 420 DAIPHHRAM FLOAT OPERATED VALVES	
APPROVED	SCALE	SIZE	REV H
CHECKED	SCALE 1:1	SIZE D	BR1078190
<small>DO NOT SCALE DRAWING. USE DIMENSIONS AND INTERPRET DIMS AND TOLERANCES PER ASME Y14.5M-2009 UNLESS OTHERWISE SPECIFIED. TOLERANCES: ANGLES: ± .015 DMM 1 PLACE .XX ± .015 DMM 2 PLACE .XXX ± .005 DMM 3 PLACE .XXX ± .005 DMM</small>			SHEET 3 OF 7

NOT ACTUAL LENGTH FOR ASSM REPRESENTATION ONLY.

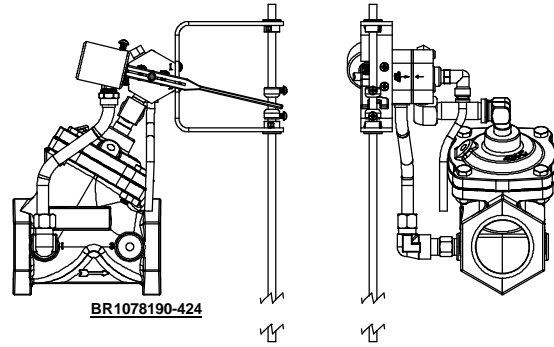
REVISIONS					
ZONE	ECN	REV.	DESCRIPTION	DATE	APPD.
SEE SHEET ONE FOR NOTES					



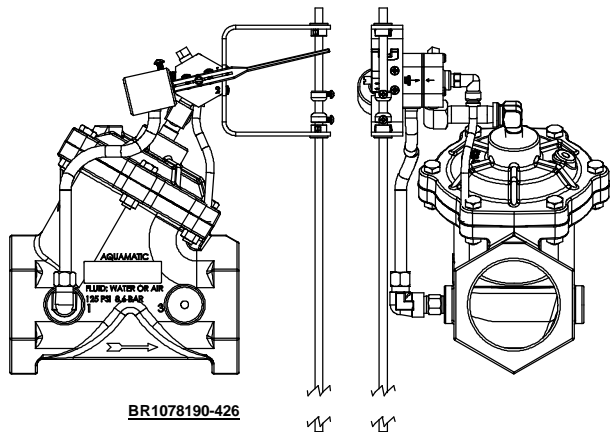
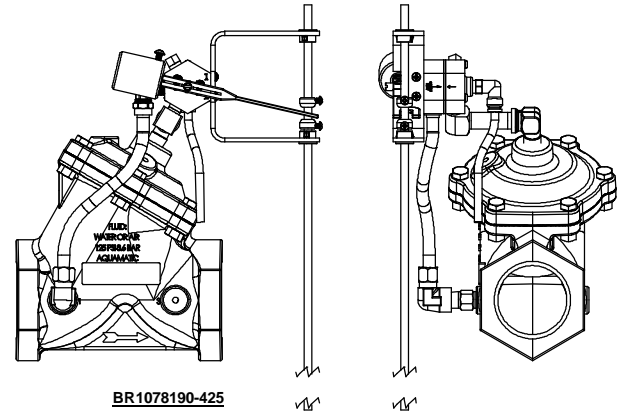
BR1078190-428



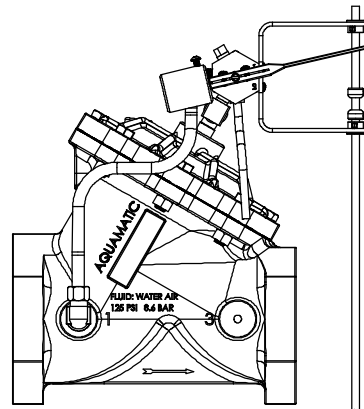
BR1078190-424



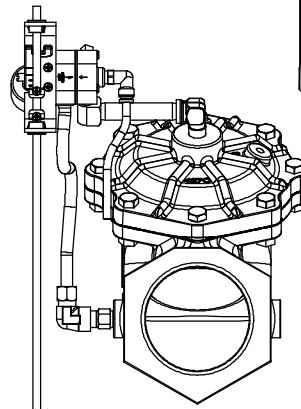
BR1078190-425



BR1078190-426

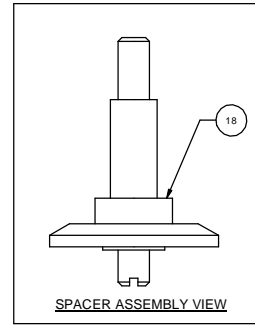
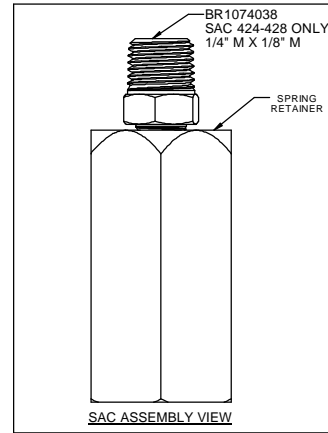
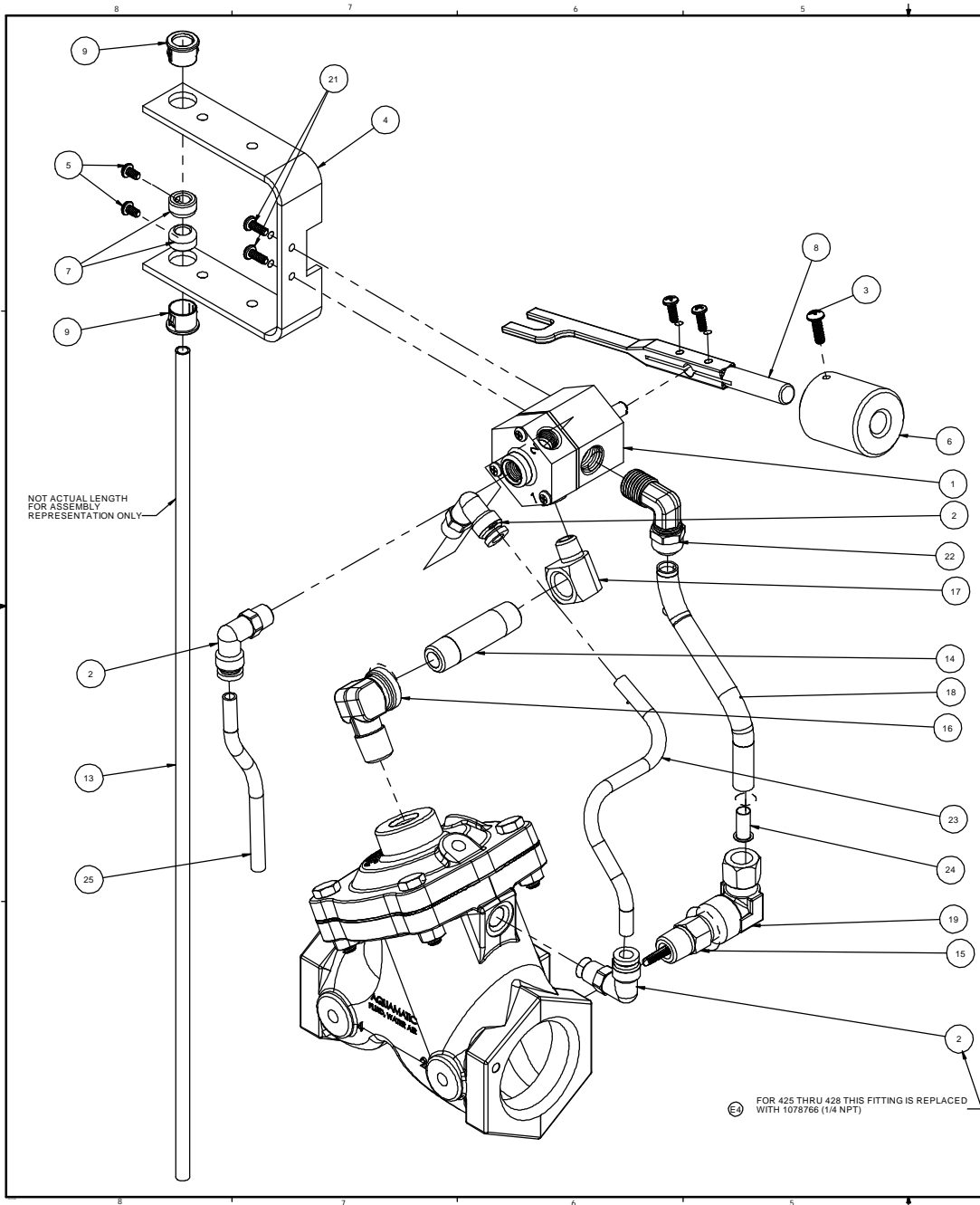


BR1078190-427



424 - 428 STANDARD VERSIONS SHOWN

© 2017 AQ Matic Valve and Controls Company, Inc. All rights reserved. <small>DO NOT SCALE DRAWING; DIMS. AND FINISHES SHOWN INTERPRET DIMS. AND TOLERANCES PER ASME Y14.5M-2009 UNLESS OTHERWISE SPECIFIED. ALL FINISHED MACHINED SURFACES 125 \sqrt{R} OR BETTER. TOLERANCES: ANGLES: \pm .1° 1 PLACE: .015 \pm .006 2 PLACE: .005 \pm .003 3 PLACE: .001 \pm .0015</small>	THIRD ANGLE PROJECTION	APPROVALS	DATE	TITLE CATALOG SHEET, 420 DAIPHHRAM FLOAT OPERATED VALVES SIZE D SCALE 1:1 SHEET 4 OF 7
		SM	04/18/11	
		APPROVED		
	CHECKED			



REVISIONS					
ZONE	ECN	REV.	DESCRIPTION	DATE	APPD.
			SEE SHEET ONE FOR NOTES		

ITEM NO.	QTY. (424-428) POWERED OPEN	PART NUMBER	DESCRIPTION	
1	1	1073992	FI TTING ASSY, 348, -AE	
2	3	1078765	FI TTING ELBOW TUBE, 1/8MNPT X	
3	1	1072375	RD. HD. MACH. SCREW (8-32 X 1/2)	
4	1	1074012	BRACKET, 348,	
5	2	1072370	RD. HD. MACH. SCREW (6-32 X 1/4)	
6	1	1074014	COUNTERWEIGHT, STD	
7	2	1074017	CENTERING COLLAR, BRASS	
8	1	1074034	LEVER, 348	
9	2	1074016	BUSHING	
10	1	1074022	STUD, THRD, #12-24 UNC-2A, SS	
11	1	16856-8	GREASE, LUBR PLATE, FGL-2	
12	1	1073996	FLOAT, SAND, 5"	
13	1	1074023	FLOAT ROD	
14	1	1071905	FI TTING NI PPLE 1/4NPTX2, BRASS	424
		1071906	FI TTING NI PPLE 1/4" X 3"	425, 426
		1071907	FI TTING NI PPLE 1/4" X 4"	427, 428
15	1	1074004	STRAINER ASSY	
16	1	1074041	FI TTING ELBOW 1/4 MNPT X 1/4F	
17	1	1074040	FI TTING ELBOW REDUCER, BR	
18	1	1071940	FI TTING TUBE, .37 OD	
19	1	1074007	FI TTING ELBOW TUBE 1/4FNPTX3/	
		1074230		424
		1074305		425
20	1	1074385	SPACER, BRASS	426
		1074484		427
		1074567		428
21	4	1072371	SCREW PHLP. PN HD	
22	1	1074037	FI TTING ELBOW BRASS	
23	1	1071936	TUBING POLY 1/4" O.D. X .035	
24	1	10332	FI TTING INSERT, 3/8	
25	1	1071936	TUBING POLY 1/4" O.D. X .035	

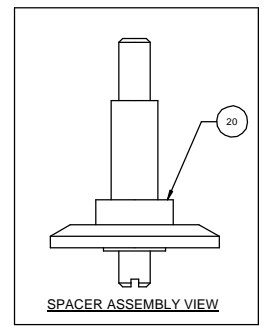
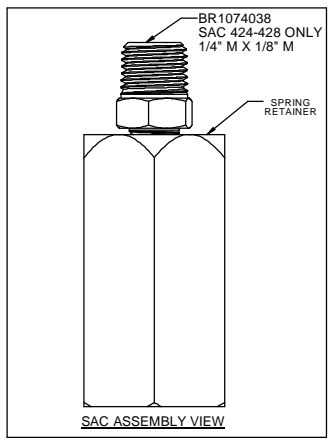
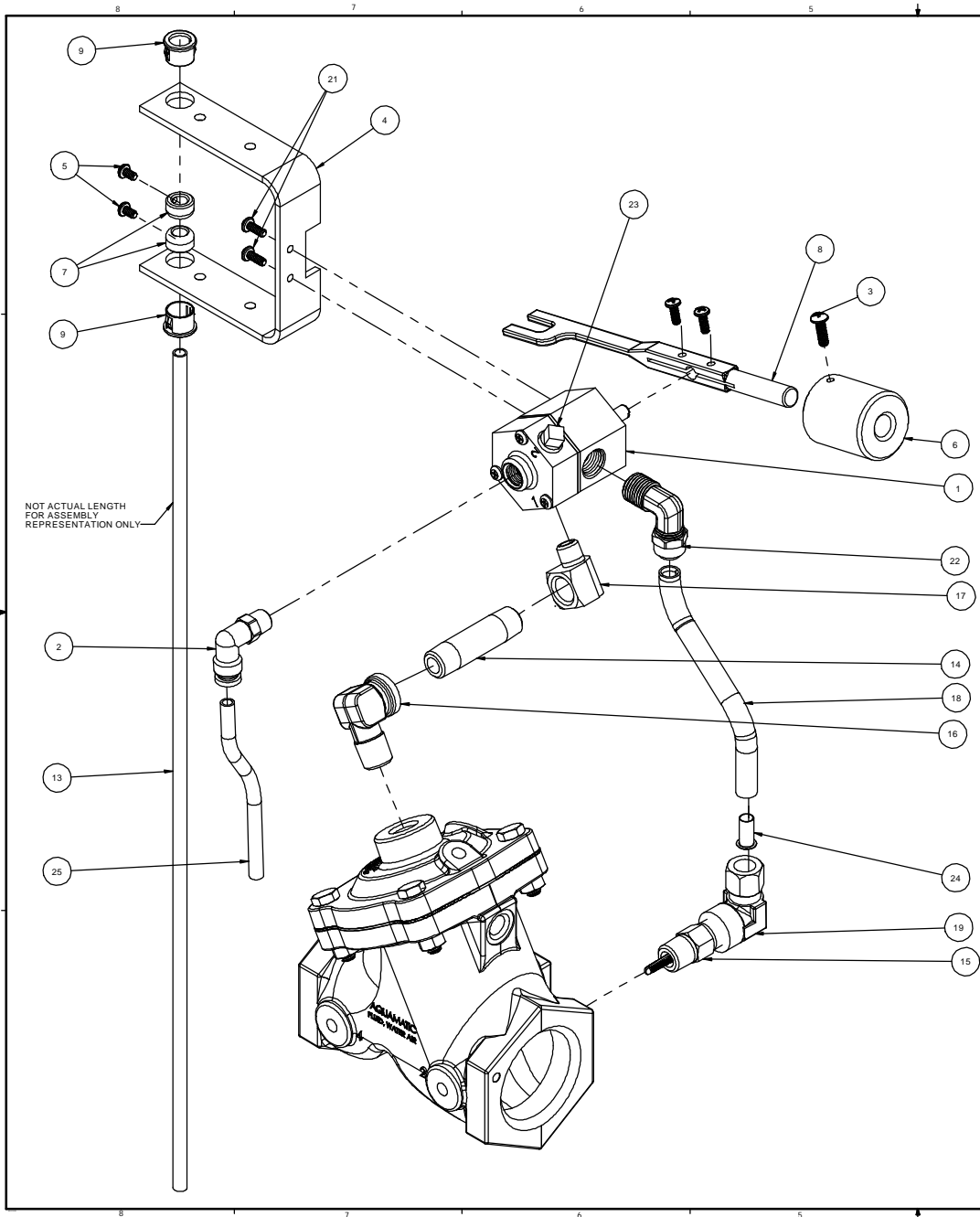
SEE NOTE-2

PAINT OPTIONS	
PART #	COLOR
42805	RED
43198	BLUE
42807	BLACK
42808	ASH

- NOTES:
- DRILL AND TAP PORT #1 WITH 1/4" NPT. [424-428 VALVES]
 - SEE DRAWING 1078193 FOR ROD LENGTH / MATERIAL OPTIONS.
 - POWERED OPEN 424 MODEL SHOWN.

POWERED OPEN VERSION
FOR 424 THRU 428
VALVES W/FLOAT

© 2017 AQ Matic Valve and Controls Company, Inc. All rights reserved.	THIRD ANGLE PROJECTION	APPROVALS	DATE	TITLE	1655 Valley Rd New Berlin, WI 53151 262.526.0100 www.aq-matic.com
DO NOT SCALE DRAWING. DIMENSIONS SHOWN IN THIS DRAWING TAKE PRECEDENCE OVER DIMENSIONS TAKEN FROM THE DRAWING. ALL FINISHED MACHINED SURFACES UNLESS OTHERWISE SPECIFIED: FINISH: RA 32. UNLESS OTHERWISE SPECIFIED: TOLERANCES: ANGLES: ± .015 ± .036 1 PLACE .01 ± .015 ± .036 2 PLACE .001 ± .015 ± .036 3 PLACE .0001 ± .015 ± .036	DRAWN	SM	04/18/11	CATALOG SHEET, 420 DIAPHRAGM FLOAT OPERATED VALVES	
	APPROVED			SIZE	D
	CHECKED			SCALE	1:1
				PART NO.	BR1078190
				REV	H
					SHEET 5 OF 7



REVISIONS					
ZONE	ECN	REV.	DESCRIPTION	DATE	APPD.
			SEE SHEET ONE FOR NOTES		

ITEM NO.	QTY.	PART NUMBER	DESCRIPTION	
1	1	1073992	PILOT CNTL ASSY, 348, -AE	
2	1	1078785	FITTING, ELBOW, TUBE, 1/8MNPT X	
3	1	1072375	RD. HD. MACH. SCREW, (8-32 X 1/2)	
4	1	1074012	BRACKET, 348	
5	2	1072370	RD. HD. MACH. SCREW, (6-32 X 1/4)	
6	1	1074014	COUNTERWEIGHT, STD	
7	2	1074017	CENTERING COLLAR, BRASS	
8	1	1074034	LEVER, 348	
9	2	1074016	BUSHING	
10	1	1074022	STUD, THRD, #12-24 UNC-2A, SS	
11	1	16856-8	GREASE LUBRIPATE, FGL-2	
12	1	1073996	FLOAT, SAND, 5"	
13	1	1074023	FLOAT ROD	
		1071905	FITTING, NIPPLE, 1/4NPTX2, BRASS	424
14	1	1071906	PIPE NIPPLE 1/4" X 3"	425, 426
		1071907	PIPE NIPPLE 1/4" X 4"	427, 428
15	1	1074004	STRAINER ASSY	
16	1	1074041	FITTING, ELBOW, 1/4 MNPT X 1/4F	
17	1	1074040	FITTING, ELBOW, REDUCER, BRS	
18	1	1071940	FITTING, TUBE, .37 OD	
19	1	1074007	FITTING, ELBOW, TUBE 1/4FNPTX3/	
		1074230		424
		1074305		425
20	1	1074385	SPACER, BRASS	426
		1074484		427
		1074567		428
21	4	1072371	SCREW, PHLP, PN HD	
22	1	1074037	FITTING, ELBOW, BRASS	
23	1	1071903	PLUG, PIPE, 1/8" MNPT, BRS, SQ HD	
24	1	10332	FITTING, INSERT, 3/8	
25	1	1071936	TUBING, POLY 1/4" O.D. X .035	

SEE NOTE-2

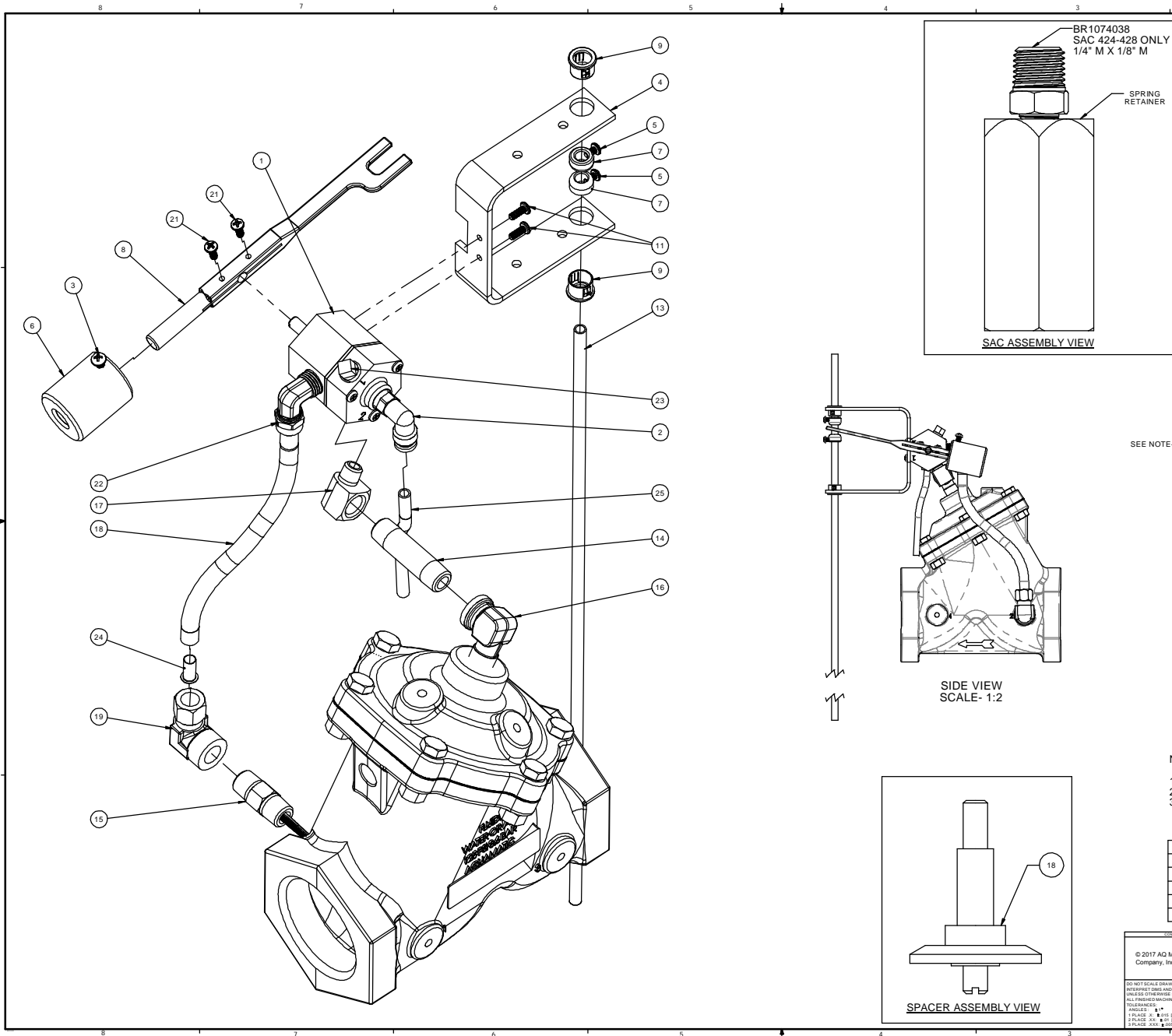
PAINT OPTIONS	
PART #	COLOR
42805	RED
43198	BLUE
42807	BLACK
42808	ASH

NOTES:

1. DRILL AND TAP PORT #1 WITH 1/4" NPT. [424-428 VALVES]
2. SEE DRAWING 1078193 FOR ROD LENGTH/MATERIAL OPTIONS.
3. STANDARD VERSION 424 MODEL SHOWN.

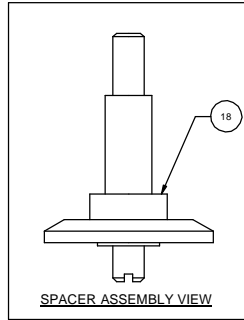
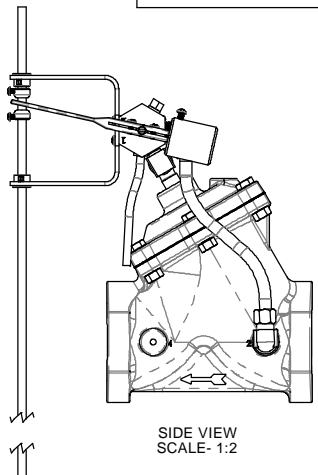
STANDARD VERSION
FOR 424 THRU 428
VALVES W/FLOAT

© 2017 AQ Matic Valve and Controls Company, Inc. All rights reserved. DO NOT SCALE DRAWING. USE DIMENSIONS AND INTERPRET DIMS AND TOLERANCES PER ASME Y14.5M-2009 UNLESS OTHERWISE SPECIFIED. ALL FINISHED MACHINED SURFACES 125 √R OR BETTER. TOLERANCES: ANGLES: ∅ ± .015 0-30° 1 PLACE .001 ± .001 30-90° 2 PLACE .001 ± .001 90-120° 3 PLACE .001 ± .001 120-180°	THIRD ANGLE PROJECTION	18605 Victor Rd New Berlin, WI 53151 262.328.5000 www.aq-matic.com
	APPROVALS	DATE
	DRAWN SM	04/18/11
	APPROVED	
CHECKED		TITLE CATALOG SHEET, 420 DIAPHRAGM FLOAT OPERATED VALVES
		SIZE D
		SCALE 1:1
		REV H
		SHEET 6 OF 7



REVISIONS					
ZONE	ECN	REV.	DESCRIPTION	DATE	APPD.
			SEE SHEET ONE FOR NOTES		

ITEM NO.	QTY. (424-428) CLOSED IF LOW	PART NUMBER	DESCRIPTION	
1	1	1073992	PILOT CNTL ASSY, 348, -AE	
2	1	1078765	FITTING, ELBOW, TUBE, 1/8 MNPT X	
3	1	1072375	RD. HD. MACH. SCREW, (6-32 X 1/2)	
4	1	1074012	BRACKET, 348	
5	2	1072370	RD. HD. MACH. SCREW, (6-32 X 1/4)	
6	1	1074014	COUNTERWEIGHT, STD	
7	2	1074017	CENTERING COLLAR, BRASS	
8	1	1074034	LEVER, 348	
9	2	1074016	BUSHING	
10	1	1074022	STUD, THRD, #12-24 UNC-2A, SS	
11	1	16856-8	GREASE, LUBRIPLATE, FGL-2	
12	1	1073996	FLOAT, SAND, 5"	
13	1	1074023	FLOAT ROD	
		1071905	FITTING, NIPPLE, 1/4NPTX2, BRASS	424
14	1	1071906	PIPE NIPPLE 1/4" X 3"	425, 426
		1071907	PIPE NIPPLE 1/4" X 4"	427, 428
15	1	1074004	STRAINER ASSY	
16	1	1074041	FITTING, ELBOW, 1/4 MNPT X 1/4F	
17	1	1074040	FITTING, ELBOW, REDUCER, BRS	
18	1	1071940	FITTING, TUBE, .37 OD	
19	1	1074007	FITTING, ELBOW, TUBE 1/4FNPTX3/	
		1074230		424
		1074305		425
20	1	1074385	SPACER, BRASS	426
		1074484		427
		1074567		428
21	4	1072371	SCREW, PHLP, PN HD	
22	1	1074037	FITTING, ELBOW, BRASS	
23	1	1071903	PLUG, PIPE, 1/8" MNPT, BRS, SQ HD	
24	1	10332	FITTING, INSERT, 3/8	
25	1	1071936	TUBING, POLY 1/4" O.D. X .035	



- NOTES:
1. DRILL AND TAP PORT #2 WITH 1/4" NPT. [424-428 VALVES]
 2. SEE DRAWING 1078193 FOR ROD LENGTH/MATERIAL OPTIONS.
 3. STANDARD VERSION 425 MODEL SHOWN.

PAINT OPTIONS	
PART #	COLOR
42805	RED
43198	BLUE
42807	BLACK
42808	ASH

STANDARD VERSION
CLOSED IF- LOW,
CLOSED BY-PILOT PRESSURE,
OPEN BY- VENT
**FOR 424 THRU 428
VALVES W/FLOAT**

© 2017 AQ Matic Valve and Controls Company, Inc. All rights reserved.	THIRD ANGLE PROJECTION	APPROVALS	DATE	16905 Victor Rd New Berlin, WI 53151 262.3584100 www.aq-matic.com
DO NOT SCALE DRAWING. DIMENSIONS SHOWN IN PARENT PARENTHESIS ARE INTERPRET DIMS AND TOLERANCES PER ASME Y14.5M-2009 UNLESS OTHERWISE SPECIFIED. ALL FINISHED MACHINED SURFACES 125 √R UNLESS OTHERWISE SPECIFIED. TOLERANCES: ANGLES: ± .1° 1 PLACE .01 ± .015 0.036 2 PLACE .001 ± .002 0.013 3 PLACE .0001 ± .0002 0.0013	DRAWN SM	DATE 04/18/11	TITLE CATALOG SHEET, 420 DIAPHRAGM FLOAT OPERATED VALVES	REV H
APPROVED	CHECKED	SCALE 1:1	SIZE D	BR1078190
				SHEET 7 OF 7